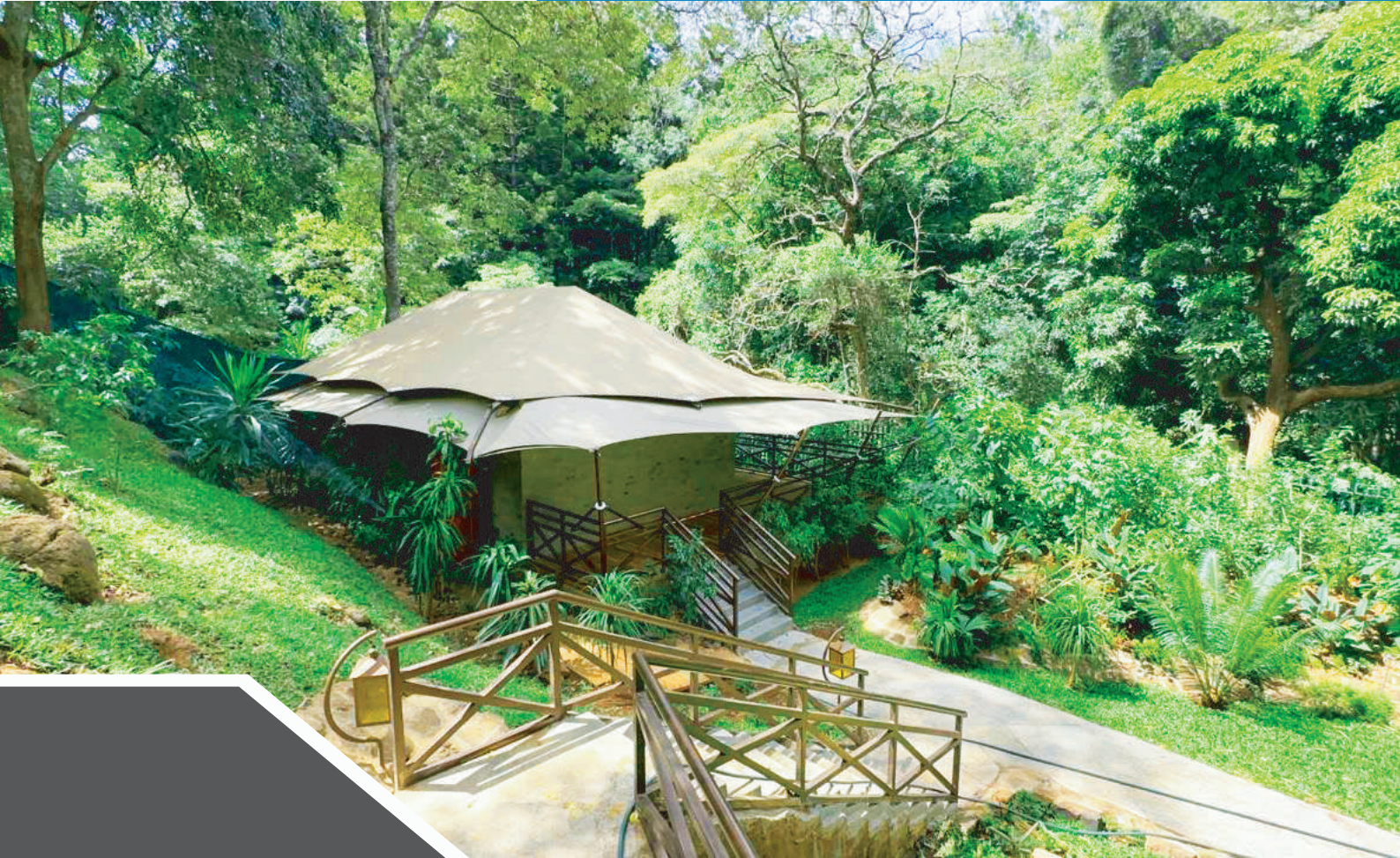


DESIGN BUILD MANAGE

INTEGRATED DEVELOPMENT SOLUTIONS FOR THE HOSPITALITY SECTOR

ISM Engineering is a full-service partner for hotel developers seeking a streamlined approach to delivering high-performance, guest-centric properties.

Through our Design · Build · Manage framework, we provide comprehensive solutions that span the entire project life cycle from initial concept to long-term operation.



FAST | AFFORDABLE | ECO

Whether developing a luxury resort, an urban business hotel, or a branded chain, we ensure precision, sustainability, and strategic value at every stage.

Accreditations:



DESIGN

Strategic Vision Meets Architectural Excellence

We translate your business objectives and brand identity into innovative, functional, and future-proof hotel designs. Our multidisciplinary design team integrates sustainability, regulatory compliance, and operational efficiency into every detail — ensuring your development is both aspirational and practical.

OUR DESIGN SERVICES INCLUDE:



BUILD

Precision Construction with Performance in Mind

We execute construction with meticulous attention to time, cost, and quality. As a single point of accountability, we manage all project elements — from procurement and permits to subcontractor coordination and risk mitigation. The result: on-time delivery, within budget, with no compromise on finish or functionality.

OUR BUILD CAPABILITIES INCLUDE:

Construction and site supervision

01

02

Green materials sourcing and implementation

Budget and schedule management

03

04

LEED / EDGE-ready execution strategies

Health, safety, and quality assurance

05

06

Turnkey project delivery

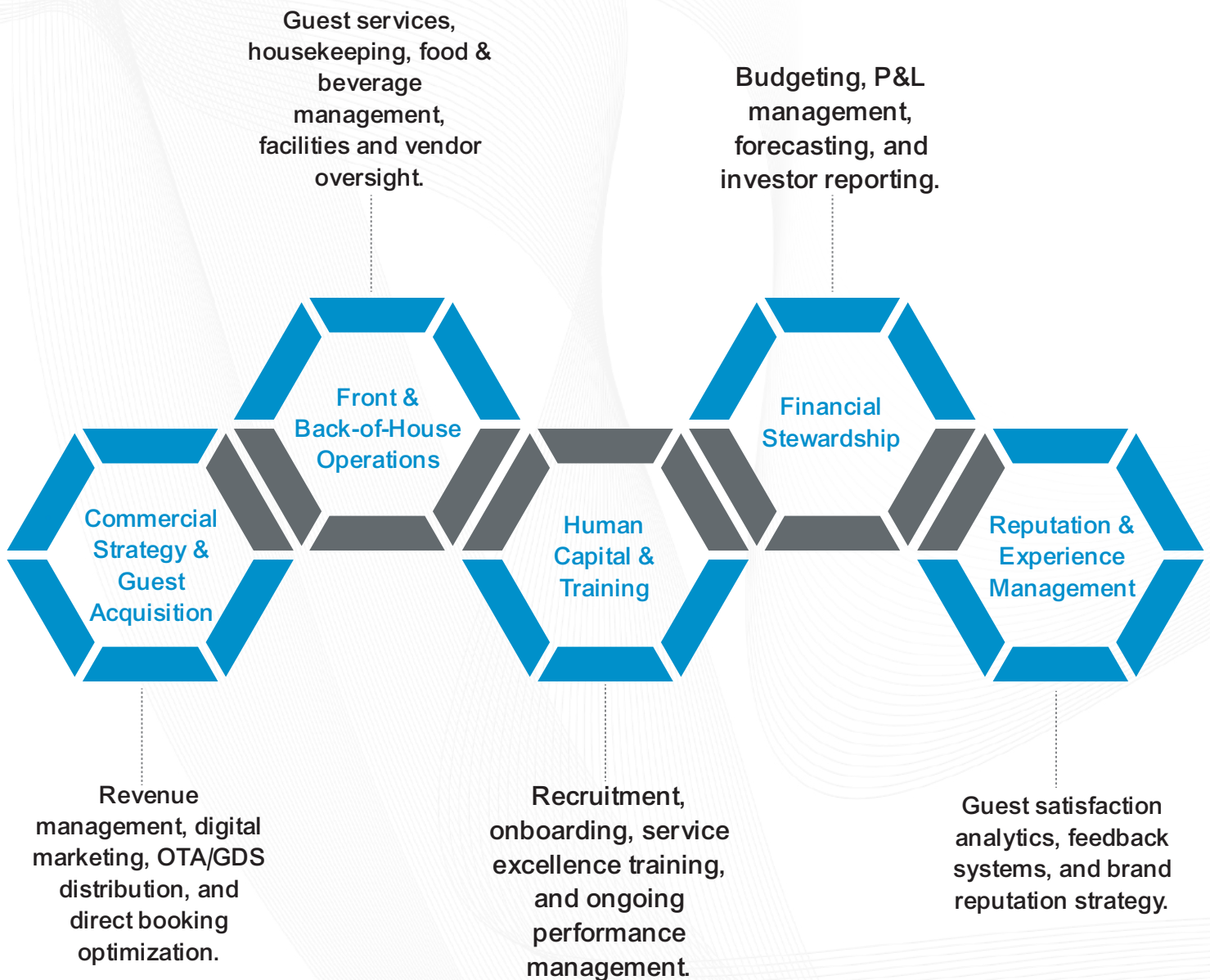


MANAGE

End-to-End Hospitality Operations & Commercial Performance Management

We provide full-scope operational management designed to transform your hotel from a developed asset into a high-performing business. Our Manage offering ensures seamless day-to-day operations, strong market presence, and sustained profitability — with a focus on exceptional guest experiences, brand integrity, and commercial outcomes.

OUR CORE CAPABILITIES INCLUDE:



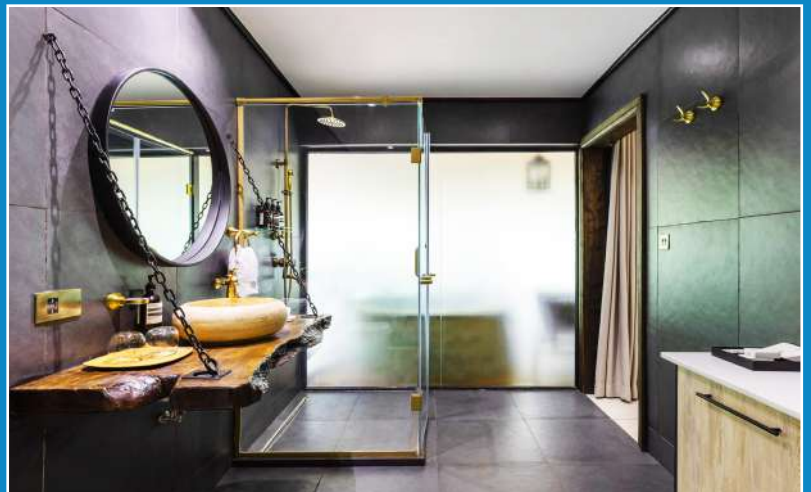
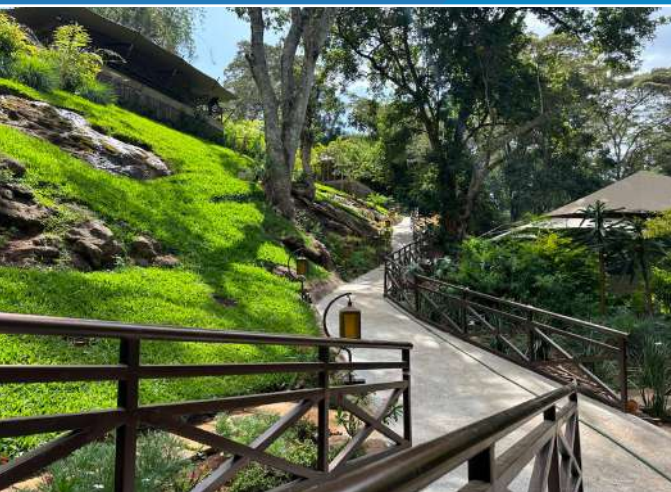
Our Recent Projects

PAX MANOR

LOCATION: MUTHAIGA

ISM Engineering constructed the accommodation cabins for the renowned Pax House Hotel, a boutique retreat that seamlessly combines architectural innovation, sustainability, and a serene forest ambiance. Guided by the client's vision of safari-style luxury cabins nestled within a pristine forest in central Nairobi, the project sought to create a tranquil escape from the city while ensuring both privacy and a deep connection with nature.

Our role extended beyond design and construction — we crafted distinctive hotel rooms that offered a unique market proposition, delivered the quality expected of a five-star establishment, transformed a cleared plot back into a lush forested setting, and provided strategic guidance on positioning the hotel to attract its ideal clientele.



KAREN HOTEL & CONFERENCE FACILITY

LOCATION: KAREN

The Karen Hotel and Conference Centre was developed to fill a gap in the exclusive suburb of Karen, providing a five-star resort featuring one- and two-bedroom A-frame cabins designed for extended stays. ISM managed the regulatory approval process, including the Environmental Impact Assessment (EIA), and coordinated with architects to optimize the site layout for functionality and guest experience.

Engineers were engaged to design efficient storm drainage systems to address seasonal rainfall, while ISM also led the process of identifying and securing a qualified operator to ensure professional management of the facility. The conference and wedding facilities were integrated to attract both local and international clientele.



ZARIA COURT

LOCATION: RWANDA



The Zaria Container Mall, located within the Zaria Court development in Kigali, was conceived as a family-friendly complex and a central hub for the adjacent basketball arena. Our brief was to design and deliver East Africa's first container-based shopping mall, incorporating retail shops, radio and podcast studios, and elevated viewing platforms overlooking the basketball stadium. Constructed entirely from repurposed shipping containers, the project was completed within an accelerated six-month schedule, demonstrating efficient planning, innovative modular design, and seamless coordination between architects, engineers, and contractors to meet both functional and aesthetic objectives.



NAIVASHA RETREAT

LOCATION: NAIVASHA



The Naivasha Retreat was developed as a unique hospitality offering in the Naivasha region, designed to balance an exceptional guest experience with a targeted return on investment within five years. The project features nine A-frame houses and a central clubhouse, strategically positioned to maximize views of Lake Naivasha. ISM oversaw the development process, ensuring the design and construction met both aesthetic and functional objectives, and advised on leveraging Airbnb and other rental platforms to optimize occupancy and revenue streams, supporting the client's goal of achieving a strong ROI while establishing a distinctive destination in the area.



MARA RESORT

LOCATION: MARA



The Mara Safari Camp project was developed in the heart of the Maasai Mara, one of Kenya's most renowned wildlife reserves, celebrated globally for its vast savannahs, exceptional biodiversity, and the annual wildebeest migration.

The client's brief was to depart from traditional tented accommodations and deliver a high-standard facility that blends luxury with the natural environment, while ensuring the camp would be highly marketable to international tourists. The design maximized views of the Mara River, providing guests with an immersive experience of the landscape and wildlife.

ISM managed the planning, regulatory compliance, and design coordination to deliver a camp that meets international hospitality standards while preserving the integrity of the surrounding ecosystem.

TAMARIND TREE HOTEL

LOCATION: LANG'ATA

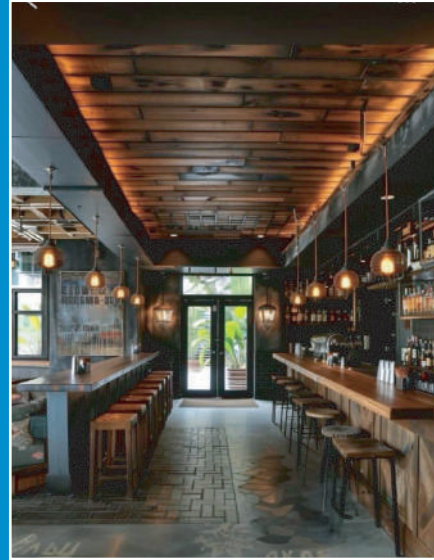
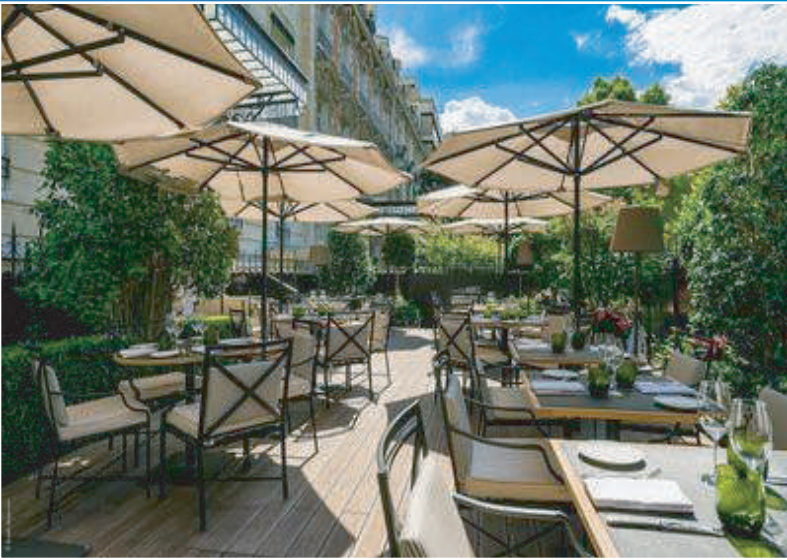


For the Tamarind Tree Hotel in Nairobi, our brief was to provide interior design solutions tailored to a modern business hotel. The design focused on creating functional, contemporary spaces that balanced comfort with efficiency, ensuring a welcoming environment for both short- and long-stay business travelers. Special attention was given to optimizing space layouts, integrating durable yet elegant finishes, and incorporating flexible meeting and lounge areas to enhance the guest experience and support the hotel's operational needs.



AXA BAR AND GRILL

LOCATION: KAREN

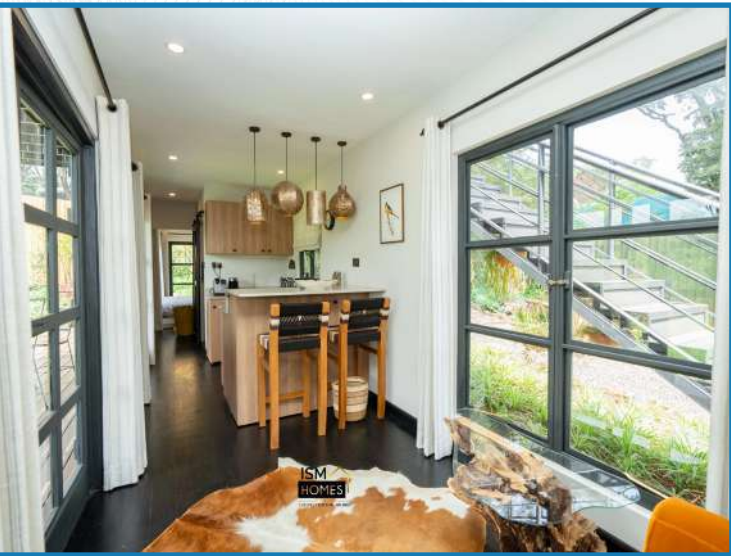


The Axa Bar and Grill was conceived as a high-end dining destination in Karen, designed and built to meet premium hospitality standards. The project included the development of a versatile hospitality tent accommodating up to 250 guests, along with a fully equipped bar and restaurant to deliver an elevated culinary experience.

ISM coordinated the design and construction process, ensuring functional layouts and seamless integration of service areas to support both daily operations and large-scale events.

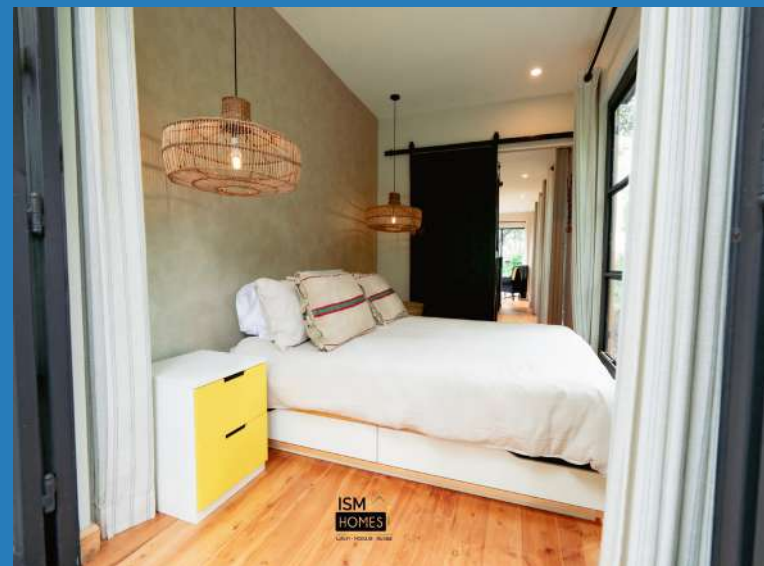
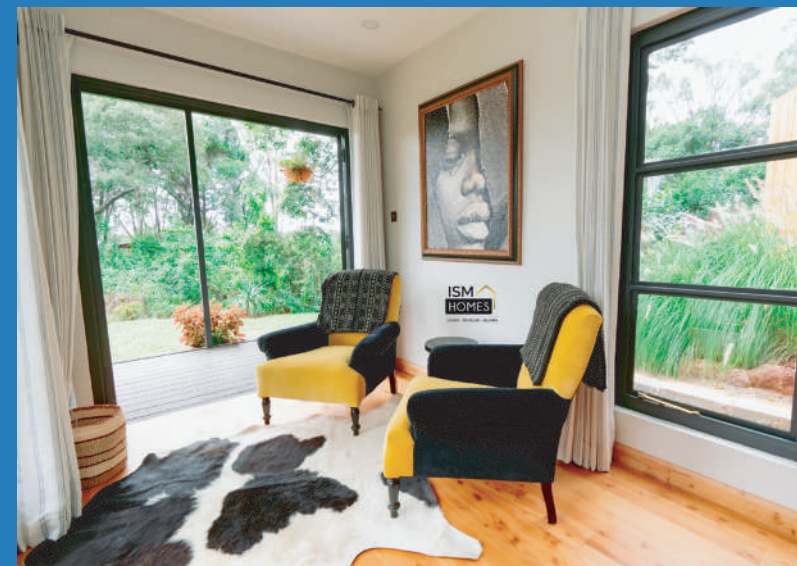
THE KAREN FOREST RETREAT

LOCATION: KAREN



The Karen Forest Retreat was designed and built with a focus on innovative container pod accommodations, strategically positioned to appeal to Airbnb clients seeking a unique and modern stay experience.

The brief emphasized moving away from traditional hospitality models to deliver high-quality, design-forward spaces with premium finishes and bespoke interior detailing. Located within easy reach of Nairobi's key attractions, the retreat combines contemporary aesthetics with functional layouts to create a high standard of accommodation tailored to both local and international guests.



ZAMBIA CAMP

LOCATION: ZAMBIA



The Zambia Gold Mining Remote Camp was developed to support mining operations by providing high-quality accommodation and life-support facilities for onsite staff. ISM was responsible for the full scope of the project, including design, construction, and ongoing management of the camp. To ensure efficiency and minimize onsite disruptions, the buildings were prefabricated offsite and transported for assembly at the remote location, enabling rapid deployment while maintaining high construction standards tailored to the operational and environmental requirements of the mine.

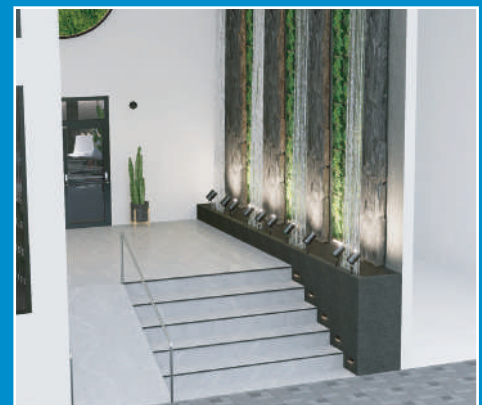
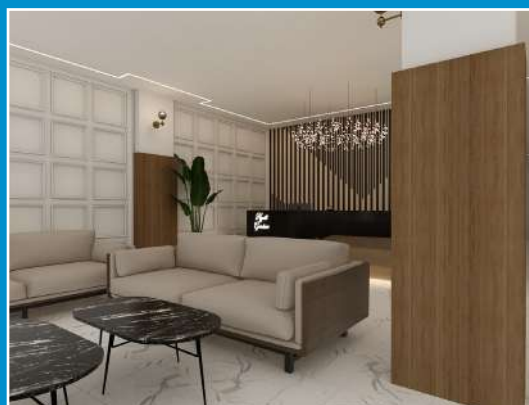
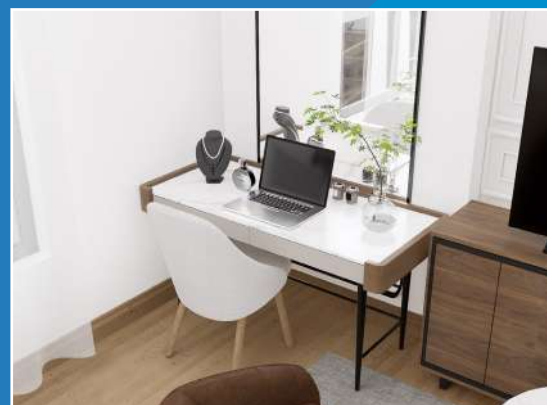
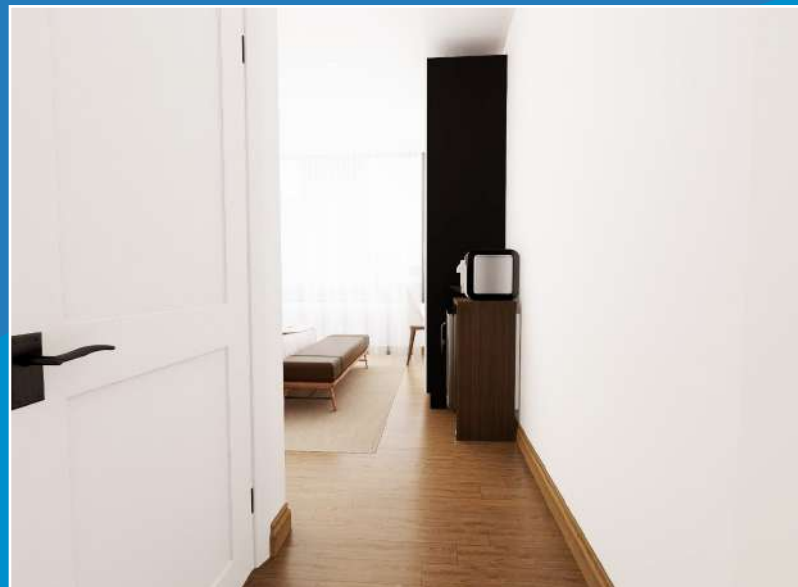
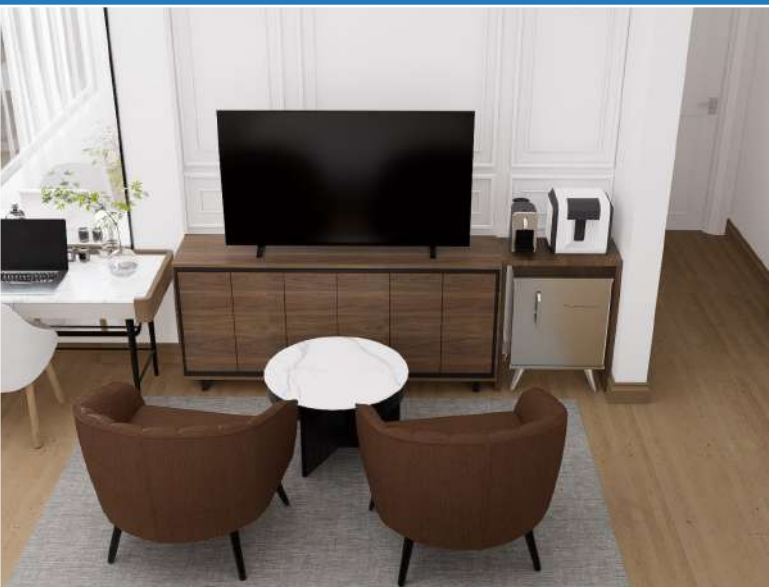
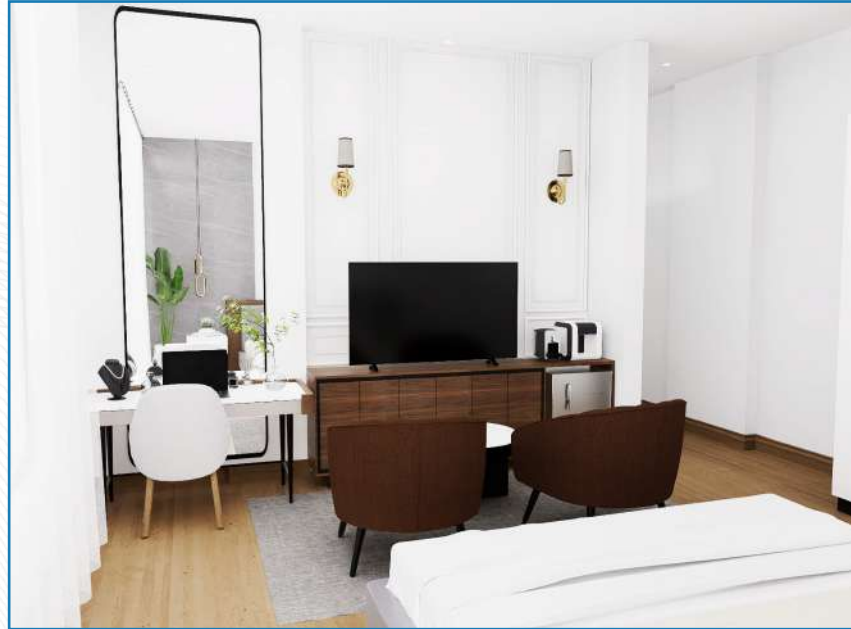


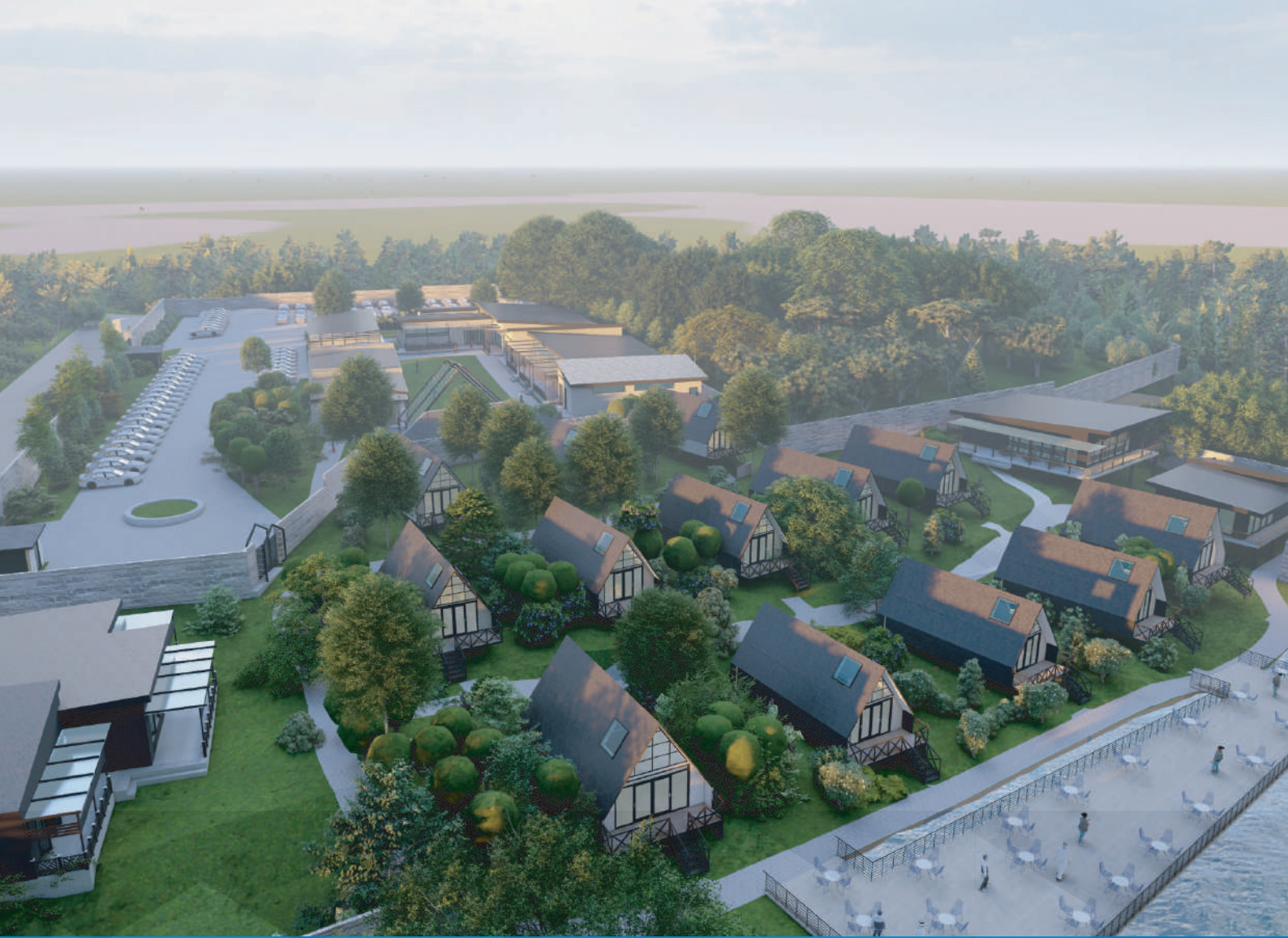
HYATT GARDENS

LOCATION: NAIROBI

The Hyatt Garden Hotel in Nairobi has been designed as a five-star property featuring 80 guest rooms and 20 serviced apartments. The scope of work included full architectural and interior design, with particular focus on space optimization, functional planning for laundry and kitchen facilities.

ISM also oversaw the interior design process, including the selection of furniture and finishes, ensuring that all elements aligned with the brand's luxury standards while meeting operational efficiency and durability requirements.





ISM

ENGINEERING



+254 797 968 817
+254 719 500 532

www.ismengineering.com
info@ismengineering.com

   
ISM Engineering